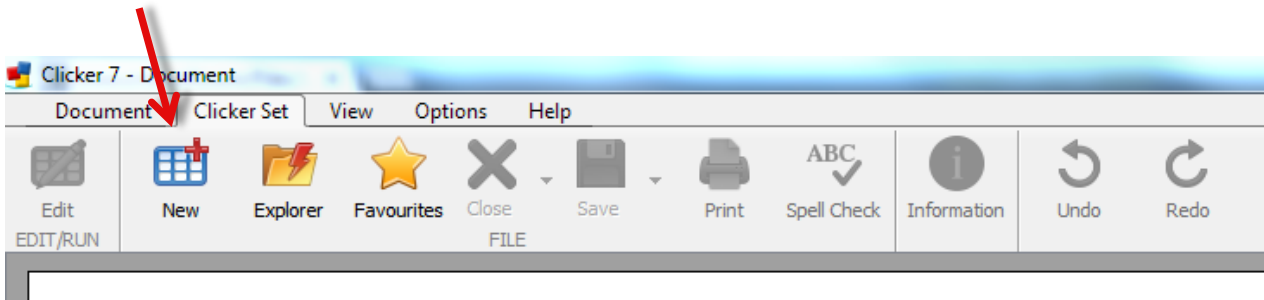
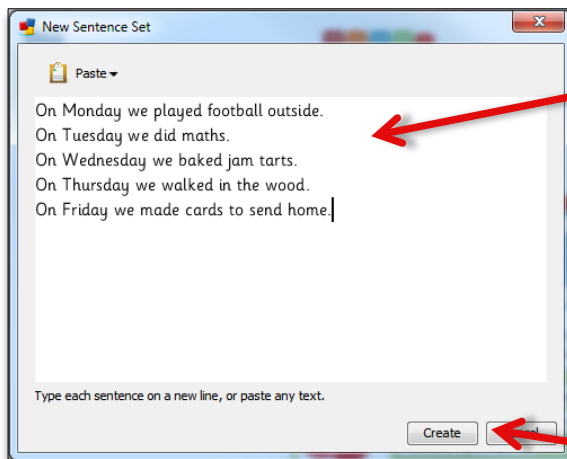
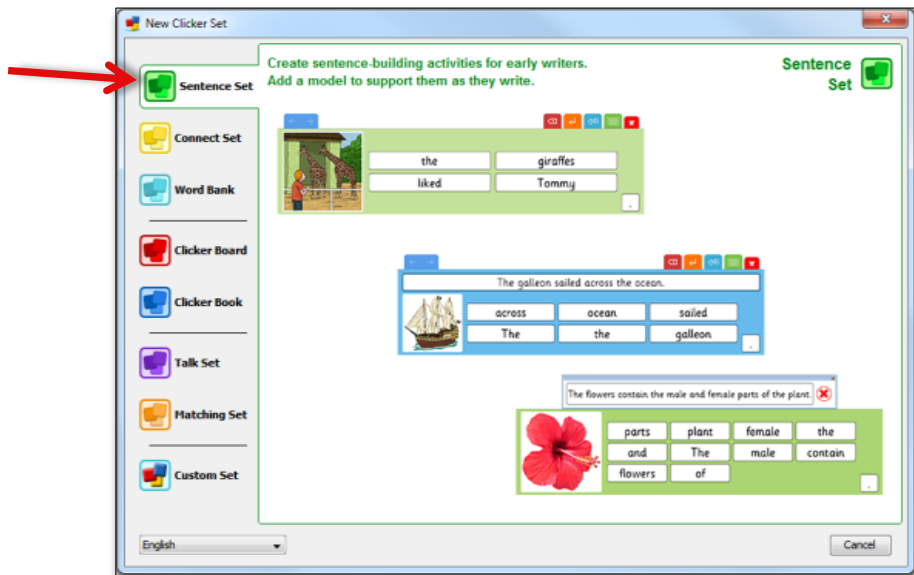


Support left-to-right directionality and correct punctuation with Sentence Sets.

From the **Clicker Set** ribbon tab, select **New**.



Select **Sentence Set**.



Type or paste your sentences in here.

To have multiple words in one cell, surround them with brackets.

Select **Create** to make your **Sentence Set**.

Sentence Set – Edit View

Use your Sentence Set.

Save, Print, Close or Spell Check your Sentence Set.

Edit your first sentence.

Choose the **Model**, **Word Order** and **Colour** of your first sentence.

See a preview of your first sentence.

Apply the settings from your first sentence to all sentences in your Set.

You can see each grid in your Sentence Set.

Add a picture to your first sentence.

Your Sentence Set is ready to use!

Did you know?

You can edit your Sentence Set at any time by selecting Edit on the Clicker Set ribbon tab.