

20th February 2024

Dear Parents/Carers

Re: Meadowfield School Development

I am writing today to provide you with an update on our growth and expansion.

Meadowfield School's pupil roll has increased significantly over the past 13 years. Since 2011, pupil numbers have grown from 206 to nearly 400, an increase of 94%.

Meadowfield will continue to work closely with KCC to help to meet the ongoing and increasing need for pupil places at special schools across the County. There is a great demand for special school places, with most being full or over capacity. In addition, a priority for KCC is to improve inclusion for pupils with SEND in mainstream provision. Meadowfield works collaboratively with KCC and both mainstream and special school colleagues to increase special school places while supporting inclusion.

Our building has expanded as well:

- 2017 – additional classrooms added on the west, north and south of our campus
- 2020 – further classroom block
- 2020 – staff room block
- 2021 – sports hall

and in addition, we acquired Ufton Lane for our 6th Form in 2019.

We will soon have an extension to our pupil dining area on the main site, this work is due to begin in April and be completed by September 2024.

In September 2022, we opened our first satellite provision at Sunny Bank Primary School and in September 2024 we will be opening our secondary satellite provision at Fulston Manor.

We have enjoyed a very welcoming and positive relationship with Sunny Bank as we work together to promote local inclusion and provide the best possible opportunities for young people.

Pupils who attend the satellite provision at the primary phase will transfer to our secondary satellite provision in order that we can continue to provide specialist approaches to meet individual needs alongside opportunities for inclusion in a mainstream setting.

It is also important to note that not only do we believe continuing education in a mainstream setting is in the young people's best interests for our Sunny Bank pupils, but due to the aforementioned demand for pupil places, we cannot accommodate pupils returning to the main site.

Continued/...

Page 2

In addition to those pupils who will be transferring from Sunny Bank to Fulston in September 2024, there will be a small group from our main site who are currently year 6 and will also be transferring. We will be consulting with parents in due course regarding those pupils who will be transferring to Fulston and we are now beginning to consider who will most benefit from the satellite provision.

If you are the parent of a year 6 pupil and are particularly interested in our Fulston satellite for your son or daughter, please feel free to notify school via the school office, office@meadowfield.kent.sch.uk

Attached you will find a drawing of the building which is being constructed especially for Meadowfield on the Fulston campus, shaded blue. I am pleased to say that planning permission has been granted and an old building has been demolished, making way for our new building which will have a great location, easily accessed from the car park and overlooking green space.

Meadowfield will initially have one satellite class at Fulston from September 2024. As more pupils move into our secondary satellite provision, we will open a second class.

It is important to note that pupils attending any of our satellite provisions are on the roll of Meadowfield School.

Our satellite classes:

- Are staffed by Meadowfield Teachers and Teaching assistants
- Follow the same personalised curriculum as the main site
- Utilise all of the same specialist learning and teaching approaches as our main site
- Provide a provision to fulfil each young person's EHCP
- Follow the Meadowfield PCR practices
- Are driven by Meadowfield ethos and values

We are committed to continuing to work with Kent County Council to meet the continual need for special school places, while at the same time ensuring that Meadowfield provides a safe, welcoming and top-quality education for each and every pupil.

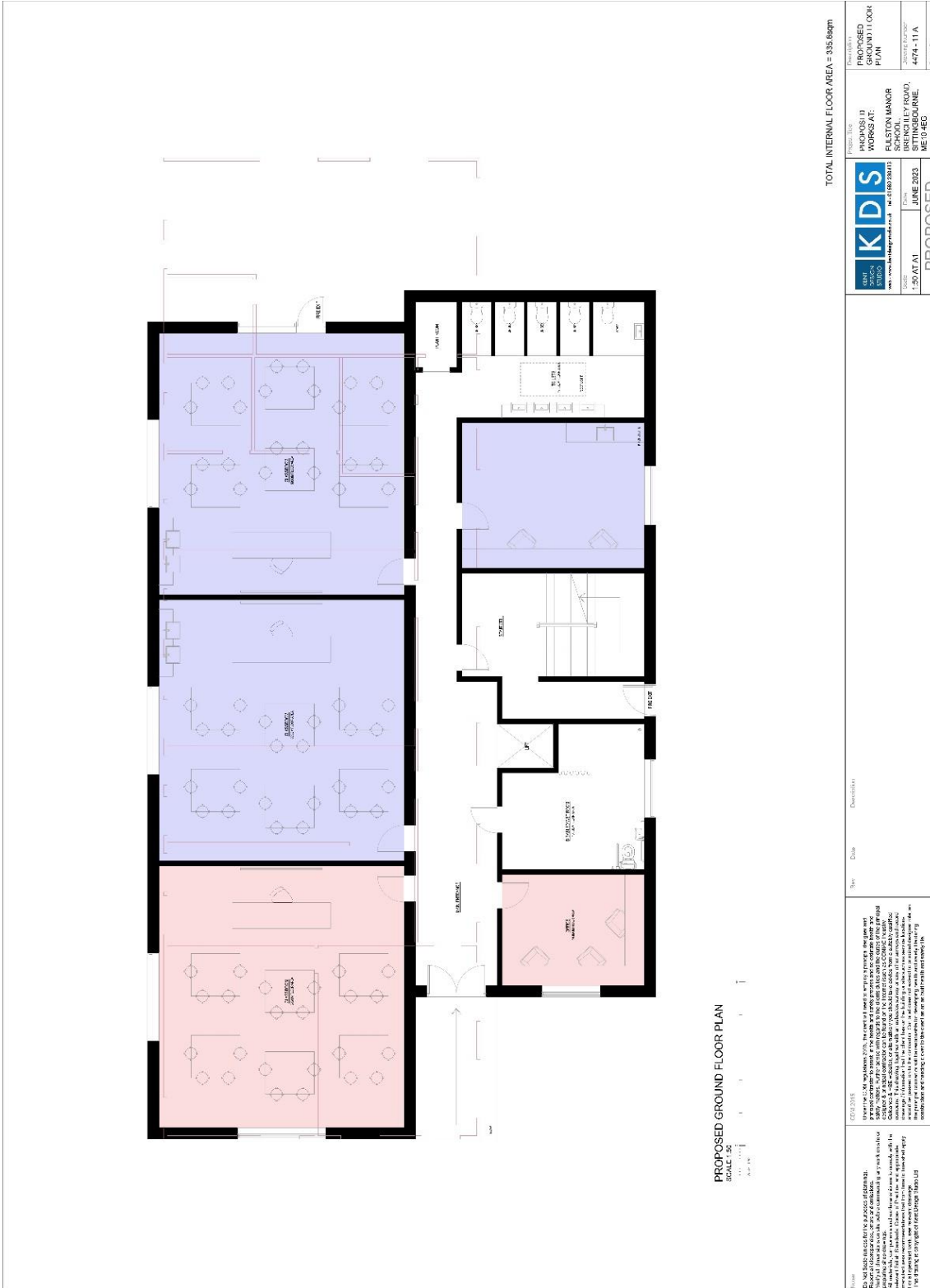
I am meeting with Fulston on 27th February to discuss plans to ensure the pupils have a smooth as possible transition and will continue to keep you updated as I receive new information. Should you have any queries, you are welcome to contact the school office.

Kind regards.

Yours faithfully



Jill M. Palmer
Executive Principal
Meadowfield School



<p>Notes:</p> <p>1. This plan is for the proposed ground floor plan of the school. It is subject to the approval of the Local Authority and the Planning Authority. It is not to be used for any other purpose without the written consent of the architect.</p> <p>2. The plan is based on the information provided by the client and is not to be used for any other purpose without the written consent of the architect.</p> <p>3. The plan is based on the information provided by the client and is not to be used for any other purpose without the written consent of the architect.</p>	<p>Client: KIDS</p> <p>Project Name: PROPOSED WORKS AT: ELSTON MANOR SCHOOL, BRINDLEY ROAD, BRINDLEY, WALSLEY, ME10 4EG</p> <p>Date: 15/06/2023</p> <p>Scale: 1:50</p> <p>Author: [Name]</p>	<p>Revision:</p> <p>1.00: PROPOSED GROUND FLOOR PLAN</p> <p>2.00: [Description]</p> <p>3.00: [Description]</p>
--	--	--

Classrooms are 60sq both shaded blue, both have sink facilities and a smaller kitchen/intervention opposite