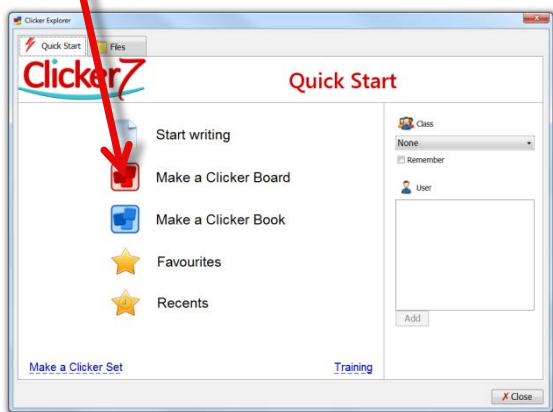
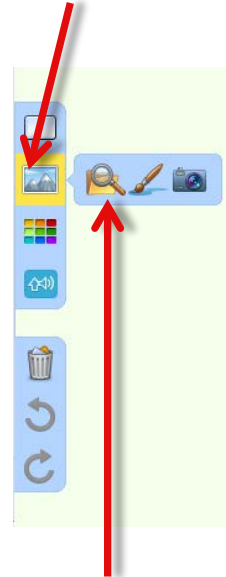


There are several ways to add pictures to both the Clicker Board background and cells on the Clicker Board.

From the **Quick Start** window, select **Make a Clicker Board**.

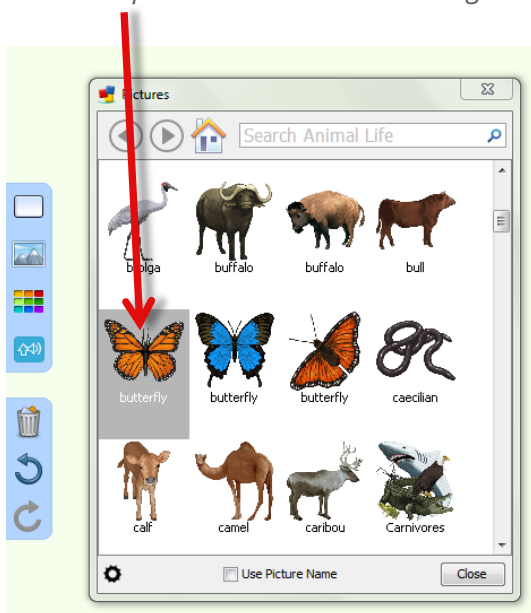


Add a picture to the board's background by clicking **Pictures**.

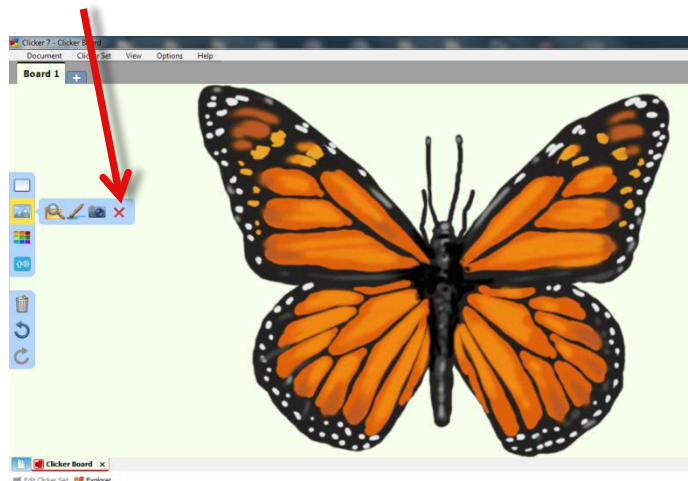


Choose to **browse pictures**, **paint a picture** or **take a photo**.

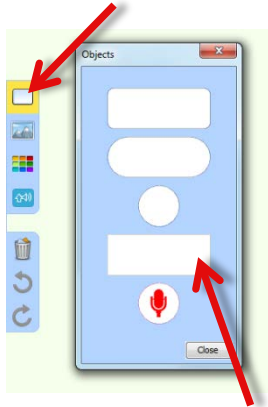
Double-click a picture to send it to the background.



To remove a picture from the board's background, ensure no cells are selected, click **Pictures** and then **Delete**.

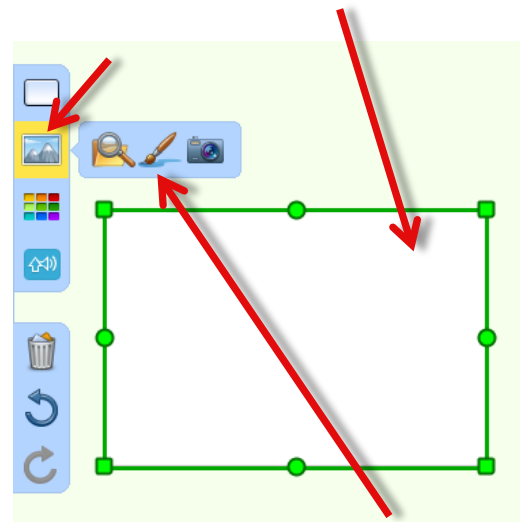


To add a picture to a cell, first add a cell to the Clicker Board by selecting **New Object**.



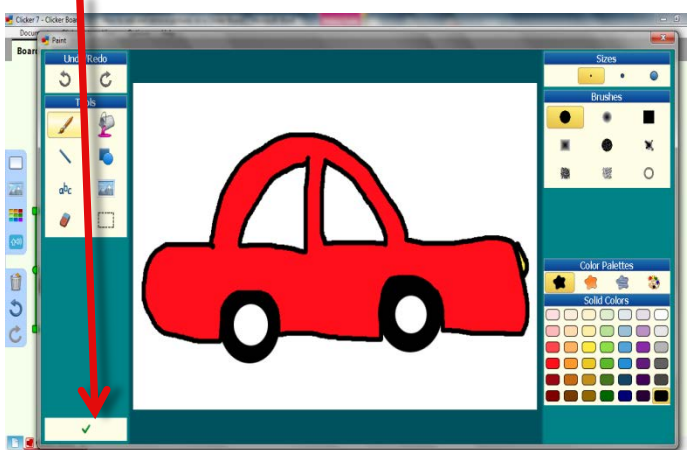
Drag your chosen cell onto the board.

Click to select the cell and then click **Pictures**.

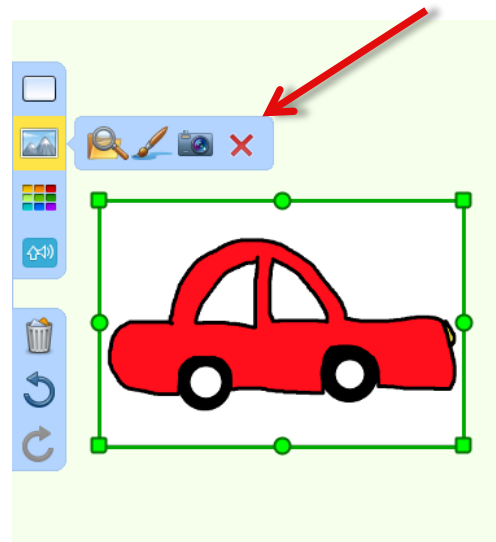


Choose to **browse pictures**, **paint a picture** or **take a photo**.

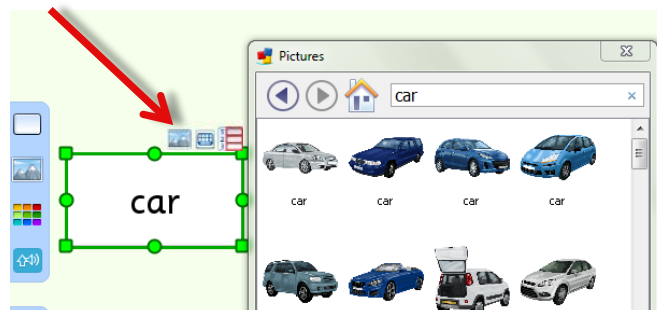
Paint a picture and then click the tick to send the painting to the cell.



To remove a picture from a cell, click the cell, click **Pictures** and then **Delete**.



To add a picture to a cell that already contains text, select the cell and click **Pictures** above it to search for a relevant picture.



**Did you know?**

**You can paint on top of any picture or photograph on your Clicker Board!**