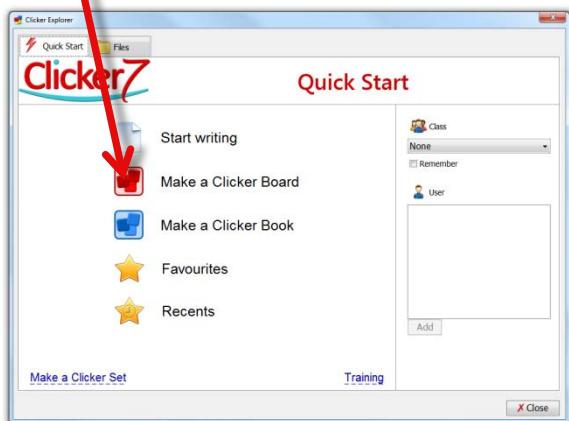
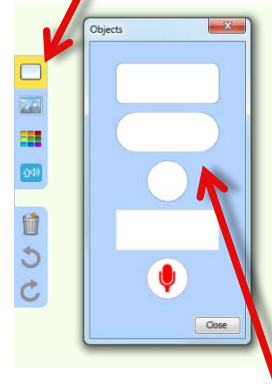


There are several ways to add text to your Clicker Board.

From the **Quick Start** window, select **Make a Clicker Board**.



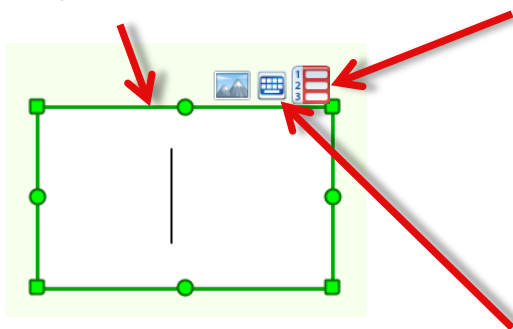
Add a cell to the board by selecting **New Object**.



Drag your chosen cell, or cells, onto the board.

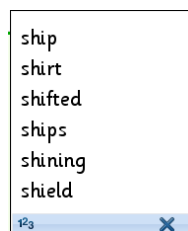
To access the cell, either:

- Double click the cell, or
- Shift-click the cell.

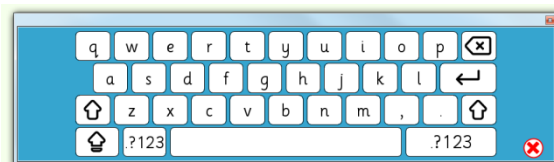


To add text, either:

- Type with the computer keyboard,
- Open the Predictor, or



- Use the on-screen keyboard.



**Did you know?**

**Double-clicking on the Clicker Board is a quick way to add a new cell!**