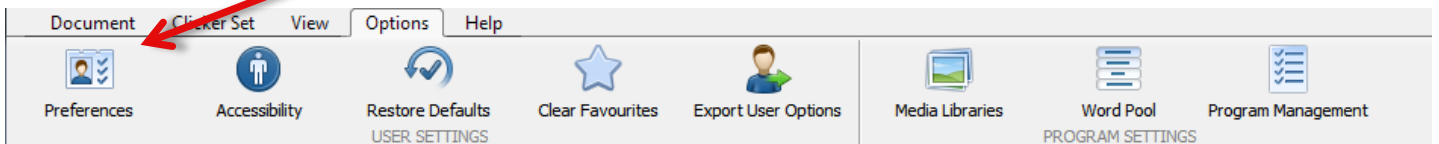


## Customise the settings of the Predictor so that each pupil benefits from a personalised level of support.

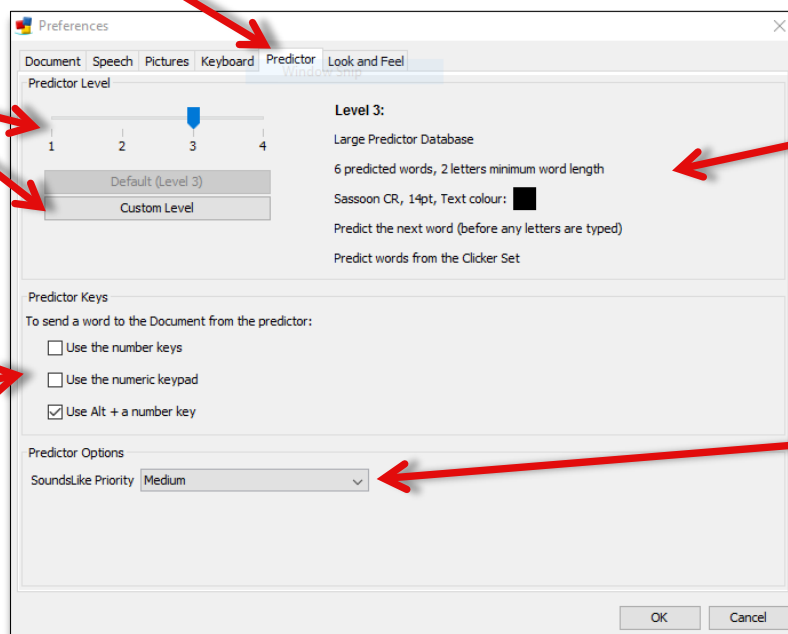
From the Options ribbon tab, select **Preferences**.



Select the **Predictor** tab.

Select a pre-set level or click **Custom Level** to design your own (see below).

Choose how words are sent from the Predictor to the Document.

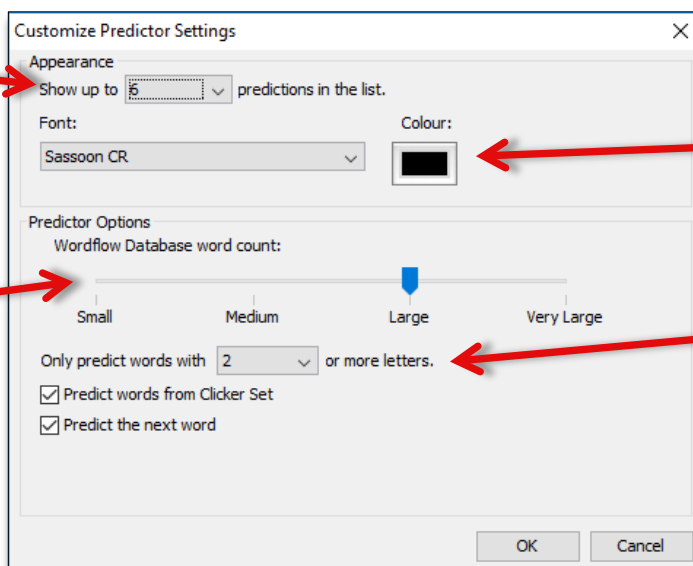


See the features of the level chosen.

Choose if SoundsLike prediction is used and what priority it has.

Select how many words the Predictor shows.

Select the size of database that the words are chosen from.

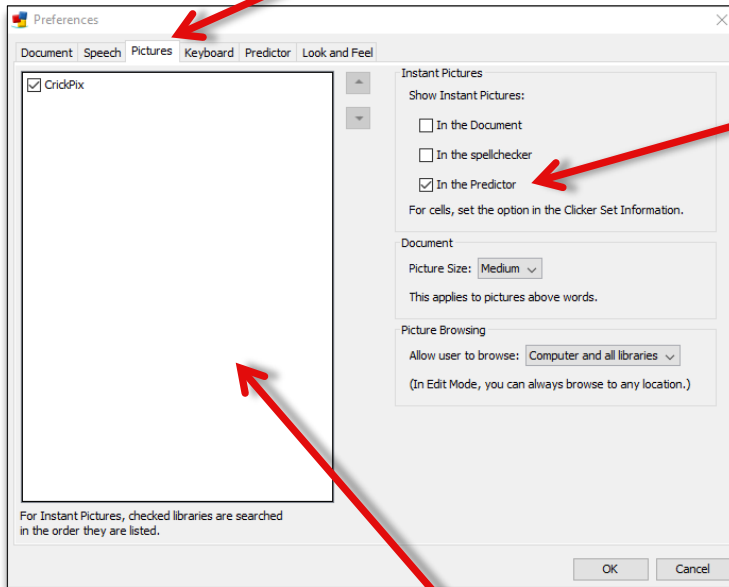


Choose the font settings.

Select the minimum number of letters required for a prediction to take place.

Select whether words from Clicker Sets or the next word is predicted.

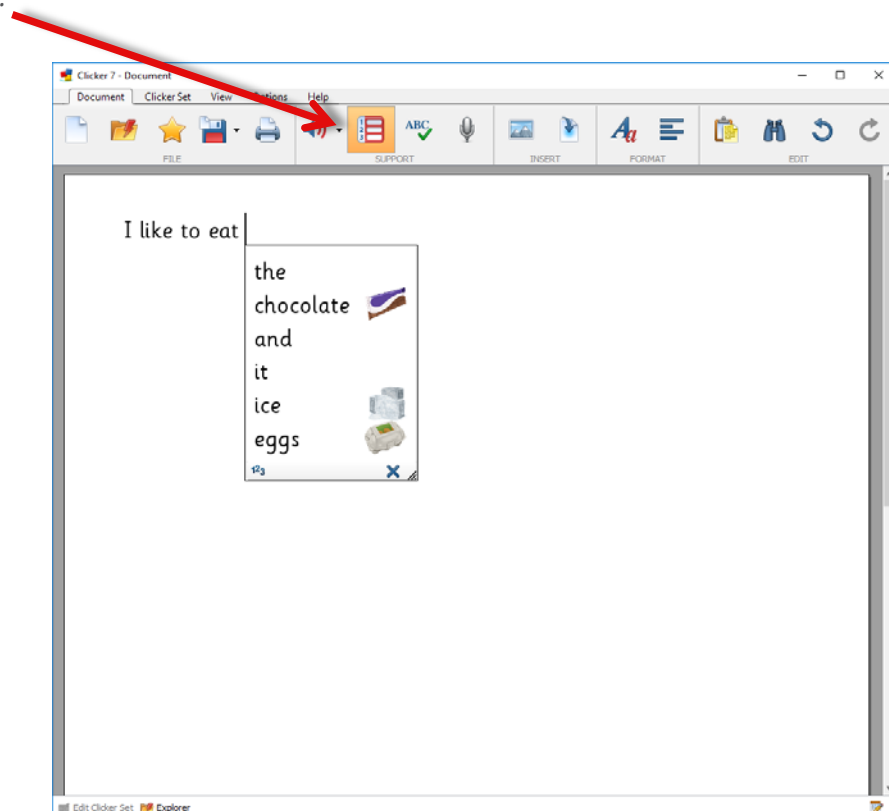
Select the **Pictures** tab to have pictures appear in your Predictor.



Select this option.

Your registered picture/symbol libraries will appear here.

On the **Document** ribbon tab select the **Predictor** icon.



As words are predicted pictures will appear if they are in the selected libraries.

**Did you know?**

**The Predictor window is resized by dragging the bottom right corner.**